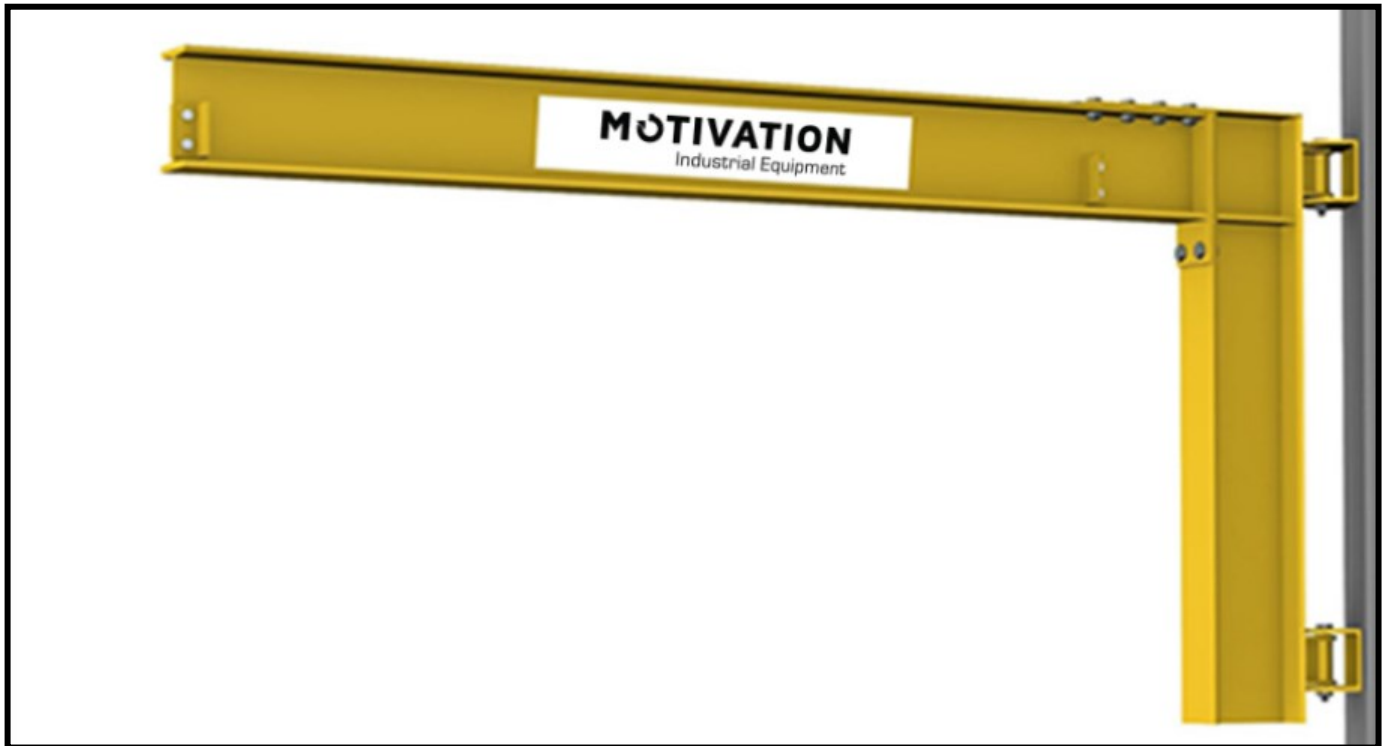


MOTIVATION JIB CRANES

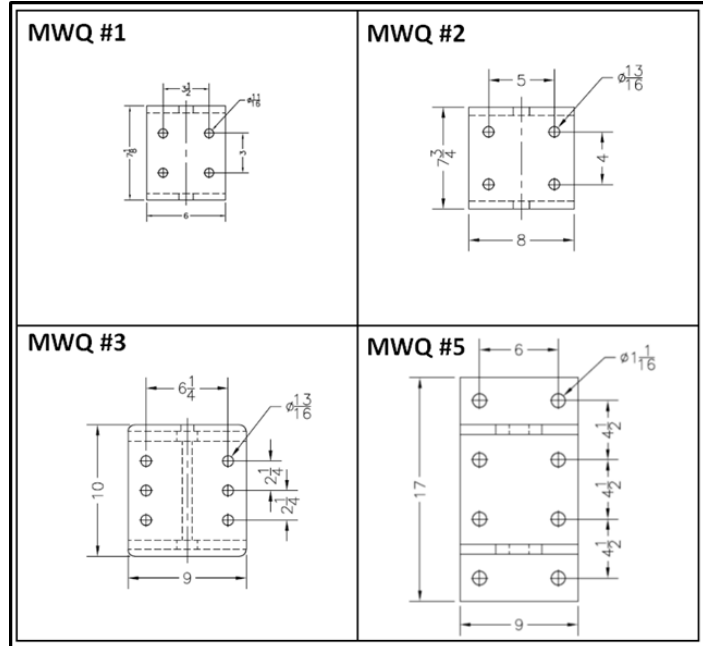
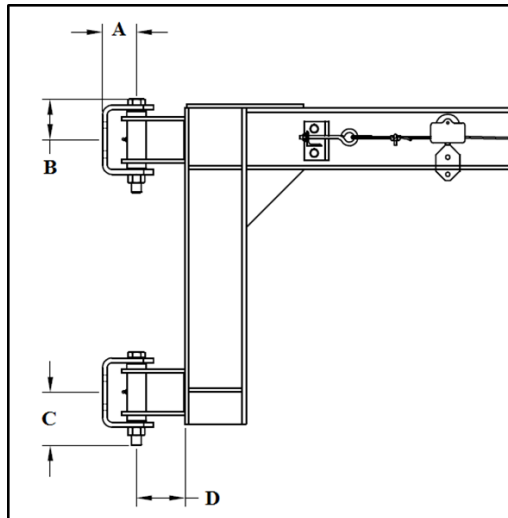
MWQ Wall Cantilevered Jib Crane

Cut Sheet



MOTIVATION JIB CRANES

MWQ Hinge Kits



HINGE NUMBER	A	B	C	D	HOLE DIAMETER	BOLT DIAMETER	MAXIMUM CAPACITY (LBS)	DRAWING #
MWQ #1	3.5"	4.1875"	5.4375"	5"	11/16"	5/8"	10290	30000242
MWQ #2	4"	4.625"	7.125"	5"	13/16"	3/4"	19330	30000243
MWQ #3	5.5"	5.125"	5.125"	5"	13/16"	3/4"	26000	31003240
MWQ #5	5.5"	8.5"	8.5"	4.75"	1 1/16"	1"	36000	30011431

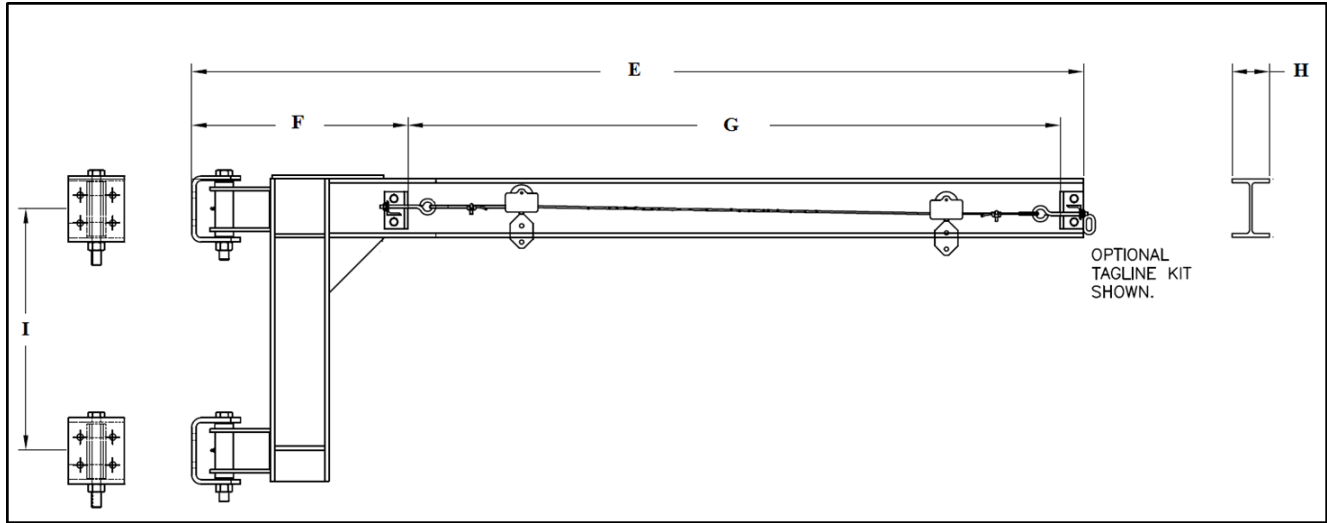
Customers can make their own high quality MWQ style wall cantilevered jib cranes using high quality hinge kits. Fabricate the beam, web stiffeners, top plate and tagline kit in-house and add the hinge kit for a complete unit.

Hinge Kits include male and female portion of the hinge. Male portion to be welded to customer supplied beam weldment.

It is the responsibility of the customer to ensure that their jib cranes are structurally and mechanical sounds and that the hinges are not overloaded with respect to Thrust/Pull and vertical forces. Use chart on the next page as a reference.

Due to our policy of continuing development, all specifications are subject to change without notice. Users of these products are responsible for ensuring their suitability for the application for which they are being used.

MOTIVATION JIB CRANES



CAPACITY (LBS)	SPAN [IN (FT)] (E)	HINGE MODEL	HINGE CENTERS (IN)	FLANGE WIDTH (IN) (H)	THRUST & PULL (LBS)	ROTATION (DEGREES)	APPROX. WEIGHT (LBS)	APPROVAL DWG
500	96 (8)	MWQ #1	26	3.33	2746	220	197	A0021385
	120 (10)	MWQ #1	30	3.33	3031	220	228	A0021386
	144 (12)	MWQ #1	36	4.03	2189	220	316	A0021387
	168 (14)	MWQ #1	42	5.27	3430	220	452	A0021388
	192 (16)	MWQ #1	48	5.27	3527	220	507	A0021389
	216 (18)	MWQ #1	54	5.77	3839	220	681	A0021390
	240 (20)	MWQ #1	60	5.77	3959	220	749	A0021391
1000	96 (8)	MWQ #1	26	4.03	5329	220	235	A0021392
	120 (10)	MWQ #1	30	5.27	5966	220	341	A0021393
	144 (12)	MWQ #1	36	5.27	6063	220	397	A0021394
	168 (14)	MWQ #1	42	5.77	6329	220	544	A0021395
	192 (16)	MWQ #1	48	5.77	6449	220	612	A0021396
	216 (18)	MWQ #1	54	5.81	6739	220	771	A0021397
	240 (20)	MWQ #1	60	6.56	7116	220	1006	A0021398
2000	96 (8)	MWQ #1	27	5.27	10073	220	292	A0021399
	120 (10)	MWQ #1	34	5.77	10194	220	416	A0021400
	144 (12)	MWQ #1	41	5.77	10250	220	487	A0021401
	168 (14)	MWQ #1	50	6.56	10165	220	754	A0021402
	192 (16)	MWQ #1	58	6.56	10149	220	852	A0021403
	216 (18)	MWQ #1	66	6.56	10166	220	950	A0021404
	240 (20)	MWQ #1	75	6.77	10188	220	1134	A0021405

MOTIVATION JIB CRANES

CAPACITY (LBS)	SPAN [IN (FT)] (E)	HINGE MODEL	HINGE CENTERS (IN)	FLANGE WIDTH (IN) (H)	THRUST & PULL (LBS)	ROTATION (DEGREES)	APPROX. WEIGHT (LBS)	APPROVAL DWG
3000	96 (8)	MWQ #1	40	5.77	10146	220	375	A0021406
	120 (10)	MWQ #1	50	5.81	10279	220	508	A0021407
	144 (12)	MWQ #1	62	6.56	10118	220	717	A0021408
	168 (14)	MWQ #1	73	6.77	10181	220	887	A0021409
	192 (16)	MWQ #2	48	8.00	18022	200	1031	A0021410
	216 (18)	MWQ #2	54	7.00	18095	200	1071	A0021411
	240 (20)	MWQ #2	60	7.07	18754	200	1426	A0021412
4000	96 (8)	MWQ #2	28	5.81	19229	200	420	A0021413
	120 (10)	MWQ #2	36	6.56	18916	200	597	A0021414
	144 (12)	MWQ #2	43	6.77	19215	200	741	A0021415
	168 (14)	MWQ #2	51	8.00	19186	200	952	A0021416
	192 (16)	MWQ #2	60	7.07	19018	200	1216	A0021417
	216 (18)	MWQ #2	68	7.50	19066	200	1401	A0021418
	240 (20)	MWQ #2	77	7.53	19077	200	1677	A0021419
6000	96 (8)	MWQ #2	42	6.77	19171	200	578	A0021420
	120 (10)	MWQ #2	53	8.00	19163	200	779	A0021421
	144 (12)	MWQ #2	64	7.07	19278	200	1023	A0021422
	168 (14)	MWQ #2	76	7.53	19170	200	1325	A0021423
	192 (16)	MWQ #3	65	7.56	25923	180	1562	A0021424
	216 (18)	MWQ #3	75	7.63	25824	180	2005	A0021425
	240 (20)	MWQ #5	61	11.04	35796	180	2441	A0021426
10000	96 (8)	MWQ #5	38	7.07	35149	180	863	A0021427
	120 (10)	MWQ #5	47	7.53	35755	180	1120	A0021428
	144 (12)	MWQ #5	57	7.63	35847	180	1557	A0021429
	168 (14)	MWQ #5	67	8.29	35839	180	1816	A0021430
	192 (16)	MWQ #5	79	11.14	35518	180	2728	A0021431
	216 (18)	MWQ #5	91	11.27	35540	180	3597	A0021432
	240 (20)	MWQ #5	100	9.99	35553	180	3348	A0021433

Due to our policy of continuing development, all specifications are subject to change without notice. Users of these products are responsible for ensuring their suitability for the application for which they are being used.